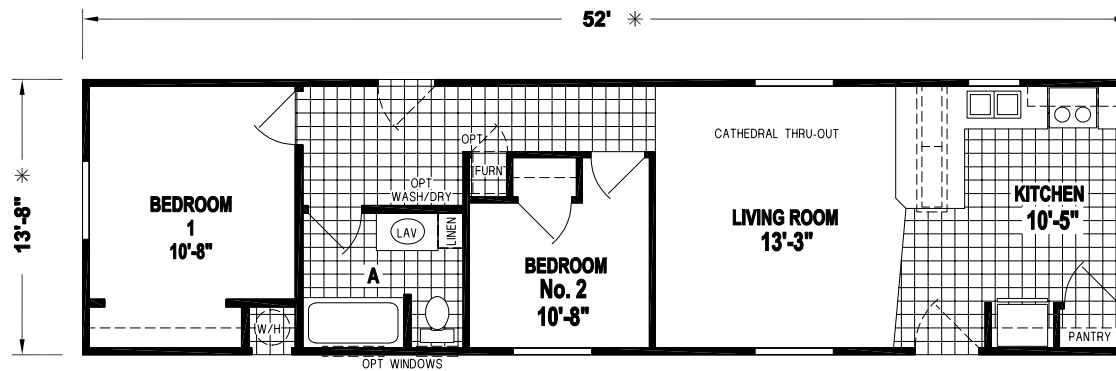


## PALM HAVEN A117CT

1 BED-1 BATH  
492 SQ.FT.



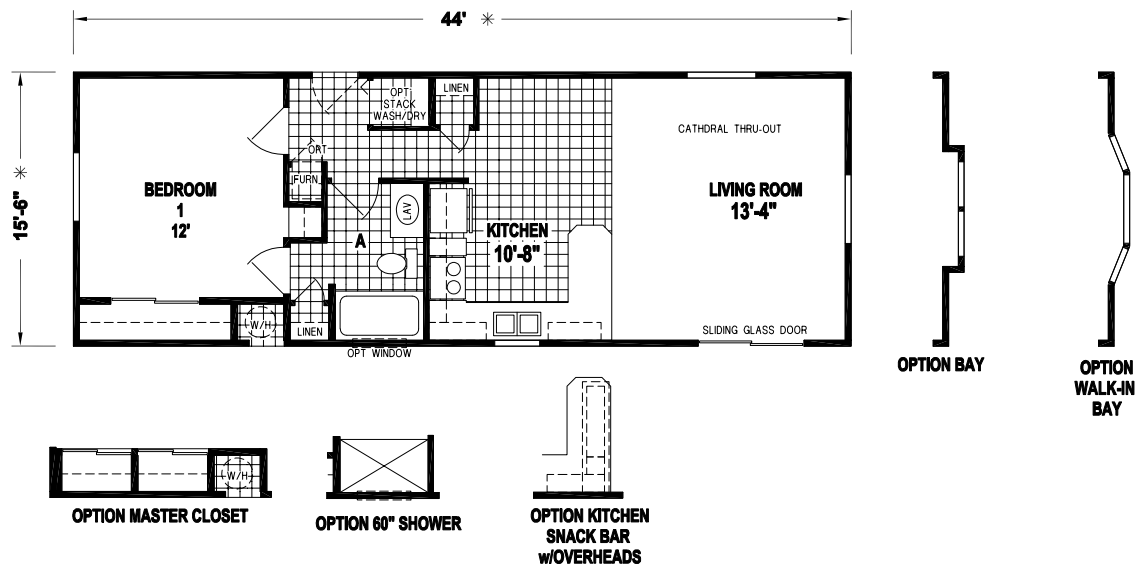
## PALM HAVEN A102CT

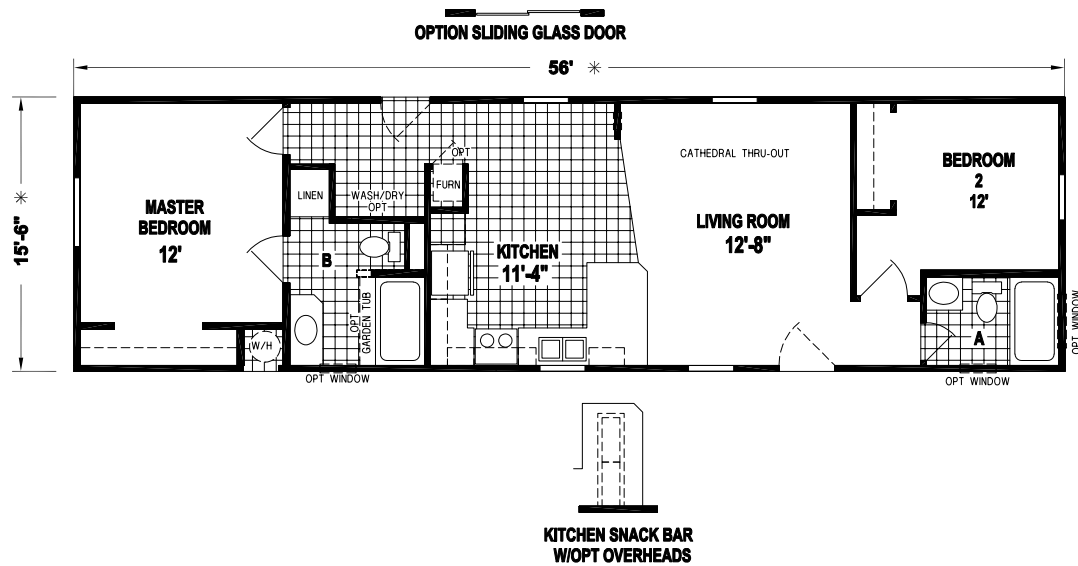
2 BED-1 BATH  
710 SQ.FT.



**PALM HAVEN  
A500CT**

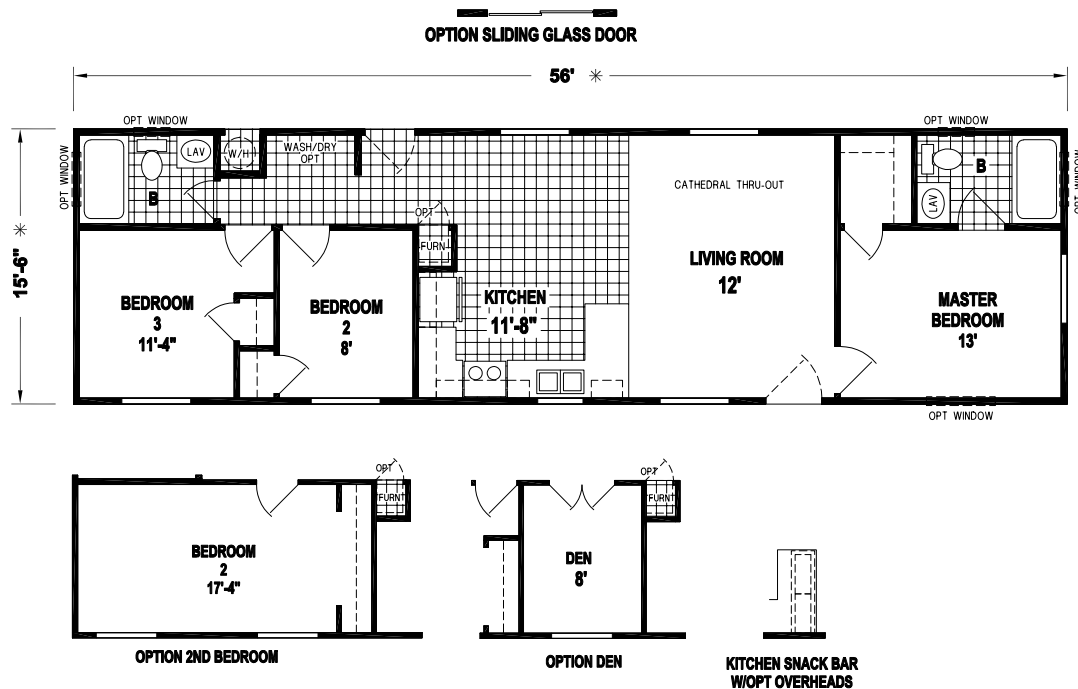
**1 BED-1 BATH  
682 SQ.FT.**





## PALM HAVEN A501CT

2 BED-2 BATH  
868 SQ.FT.

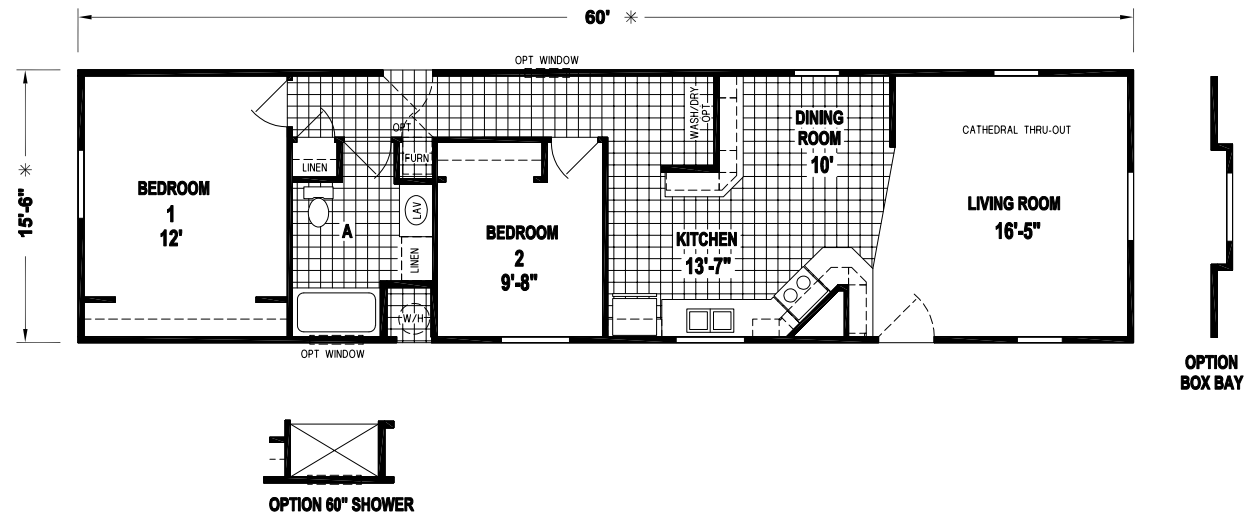


## PALM HAVEN A541CT

3 BED-2 BATH  
868 SQ.FT.

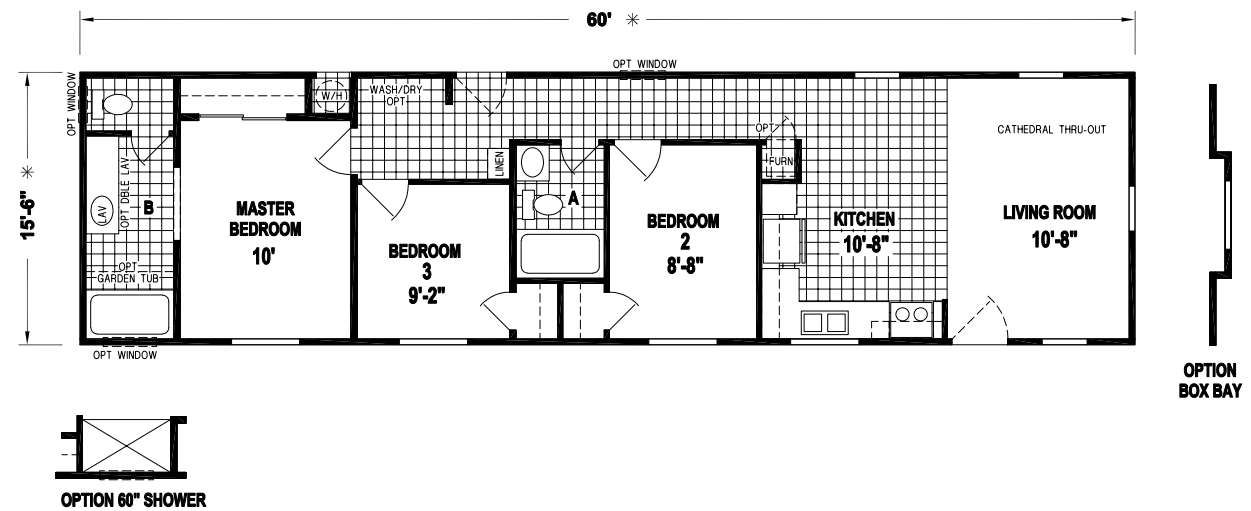
## PALM HAVEN A551CT

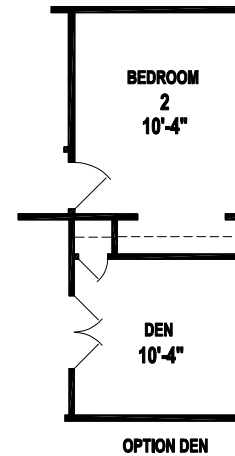
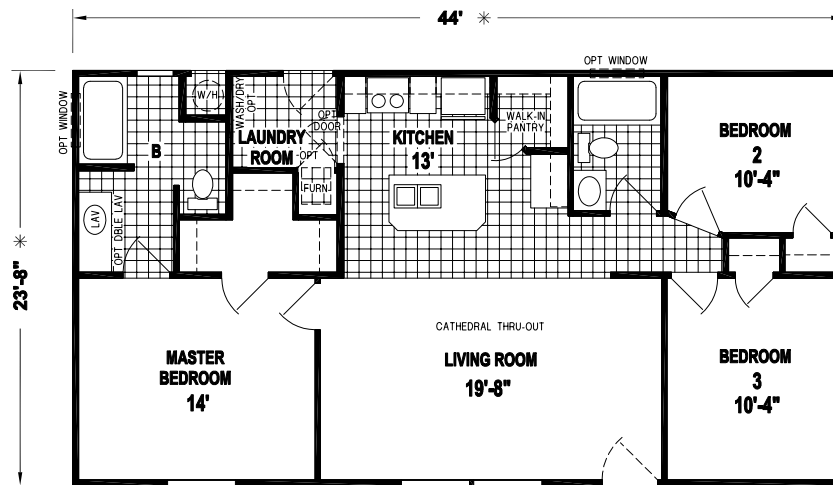
2 BED-1 BATH  
930 SQ.FT.



## PALM HAVEN A506CT

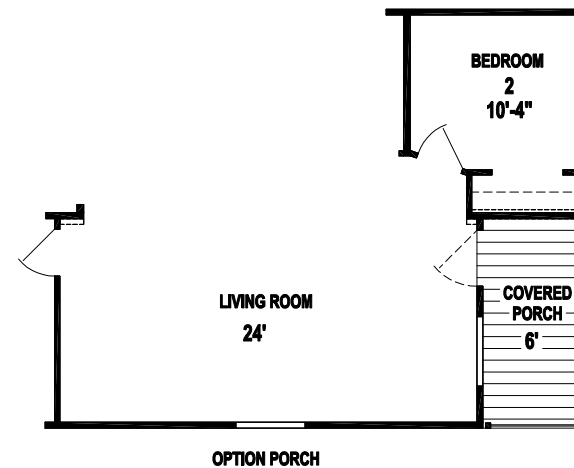
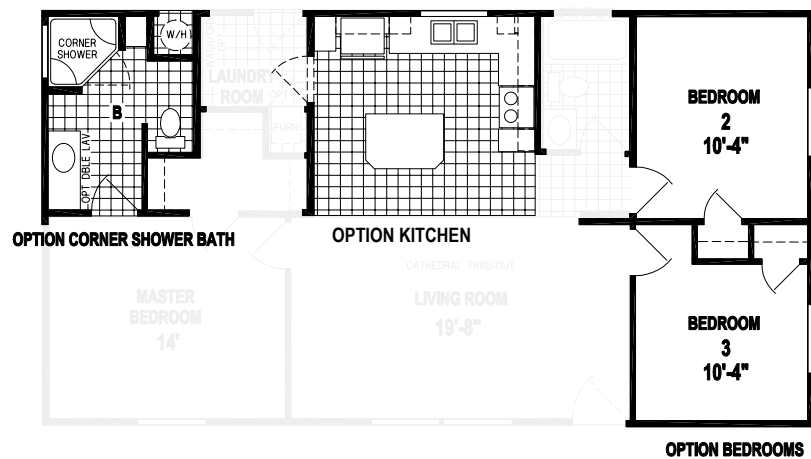
3 BED-2 BATH  
930 SQ.FT.





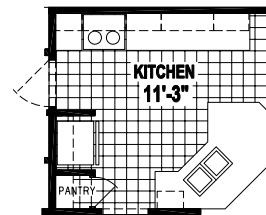
**PALM HAVEN**  
**2406CT**

**3 BED-2 BATH**  
**1041 SQ.FT.**

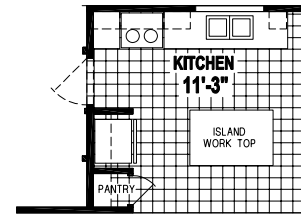


**PALM HAVEN**  
2408CT

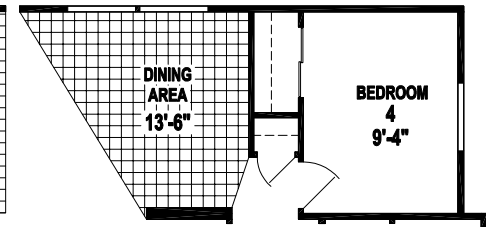
3 BED-2 BATH  
1309 SQ.FT.



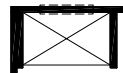
OPTION KITCHEN



ALTERNATE ISLAND KITCHEN



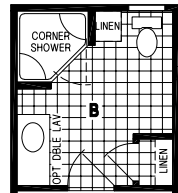
OPTION 4TH BEDROOM



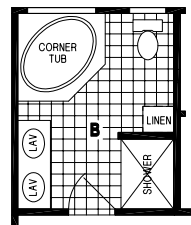
OPTION 60" SHOWER



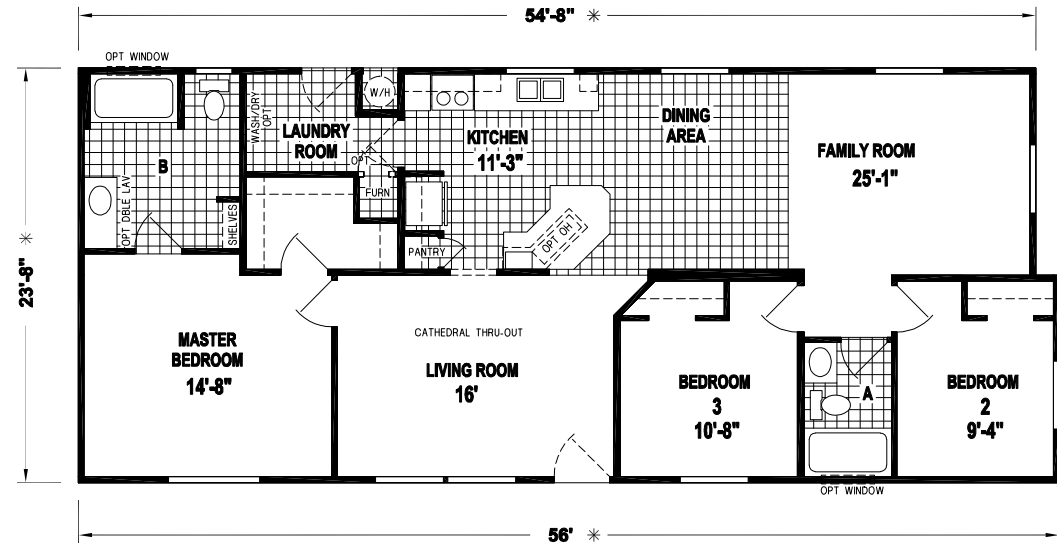
OPTION SLIDING GLASS DOOR

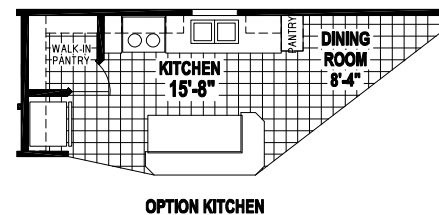
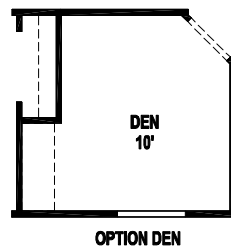
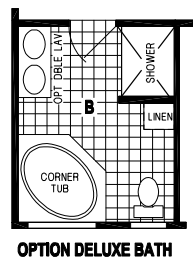
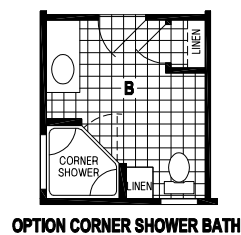
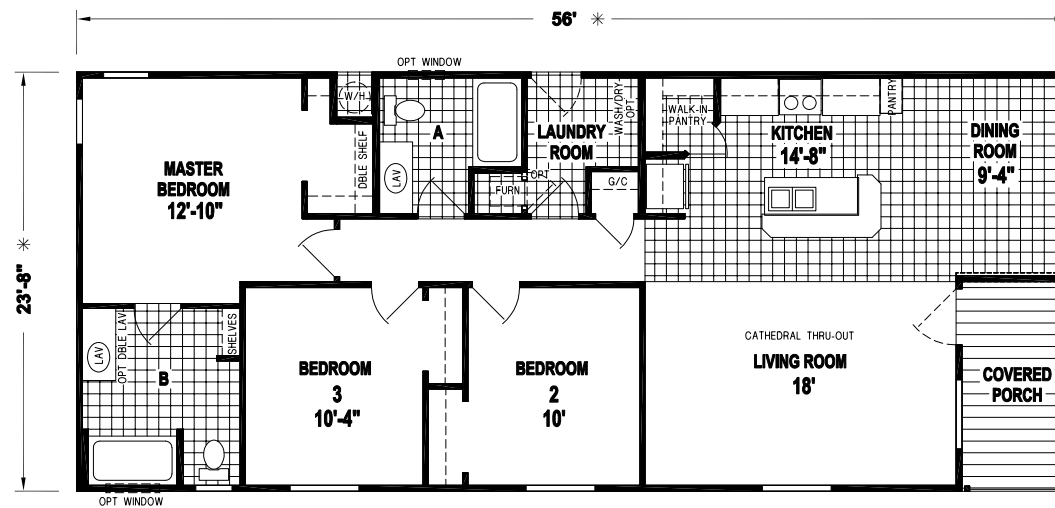


OPTION CORNER SHOWER BATH



OPTION DELUXE BATH



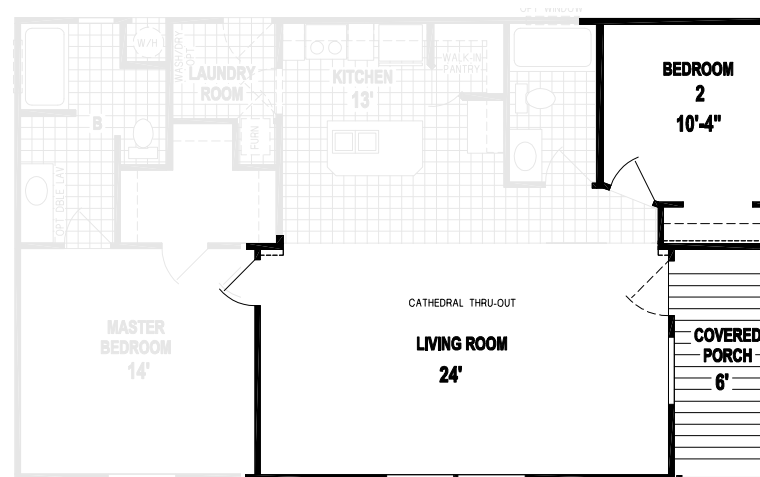
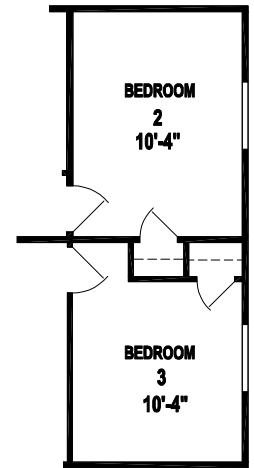
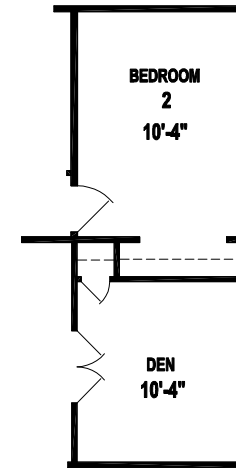
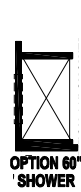
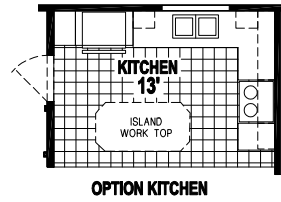
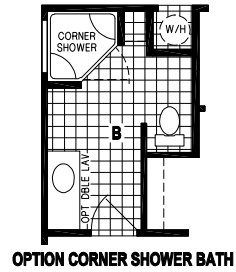


## PALM HAVEN 2410CT

3 BED-2 BATH  
1325 SQ.FT.

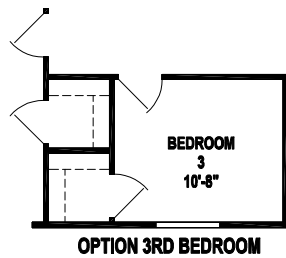
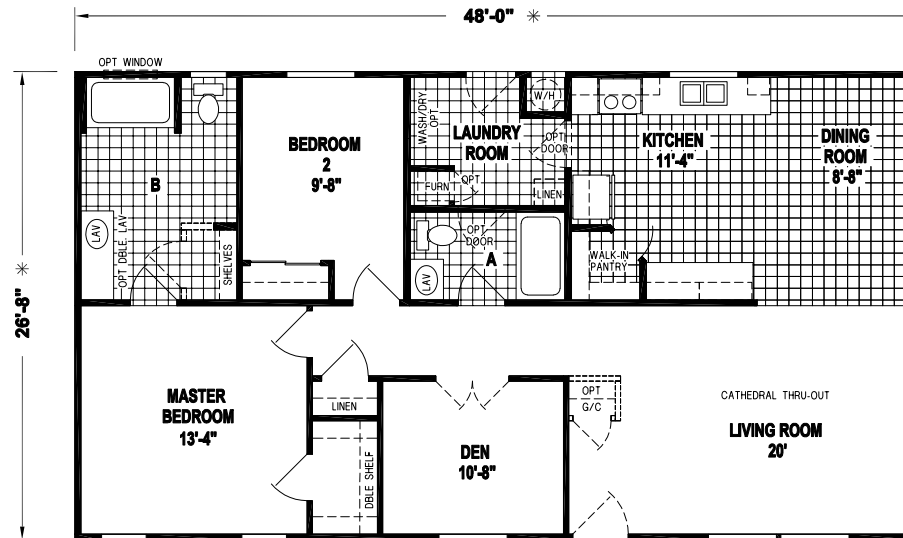
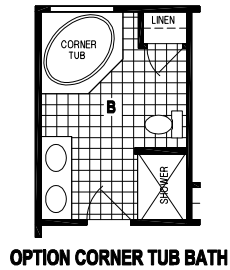
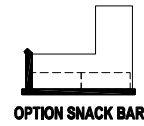
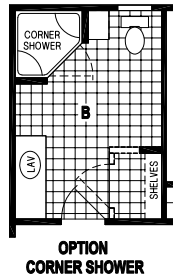
# **PALM HAVEN** **A3406CT**

**3 BED-2 BATH**  
**1173 SQ.FT.**



**OPTION PORCH**

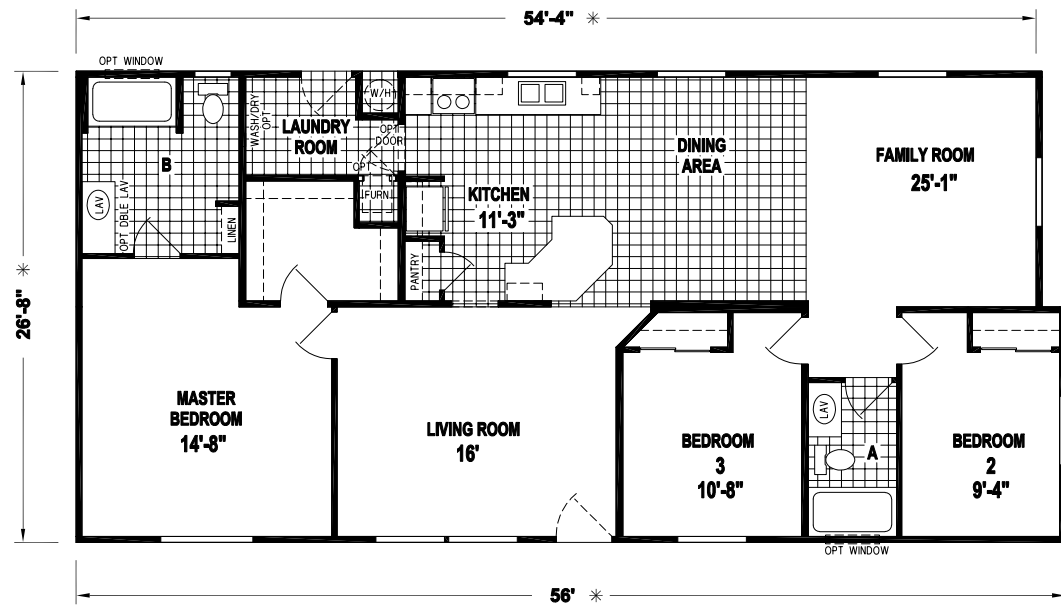
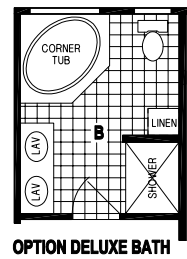


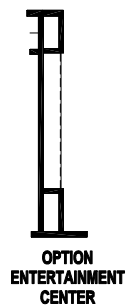
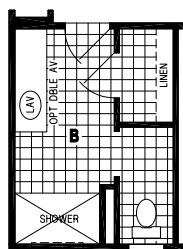
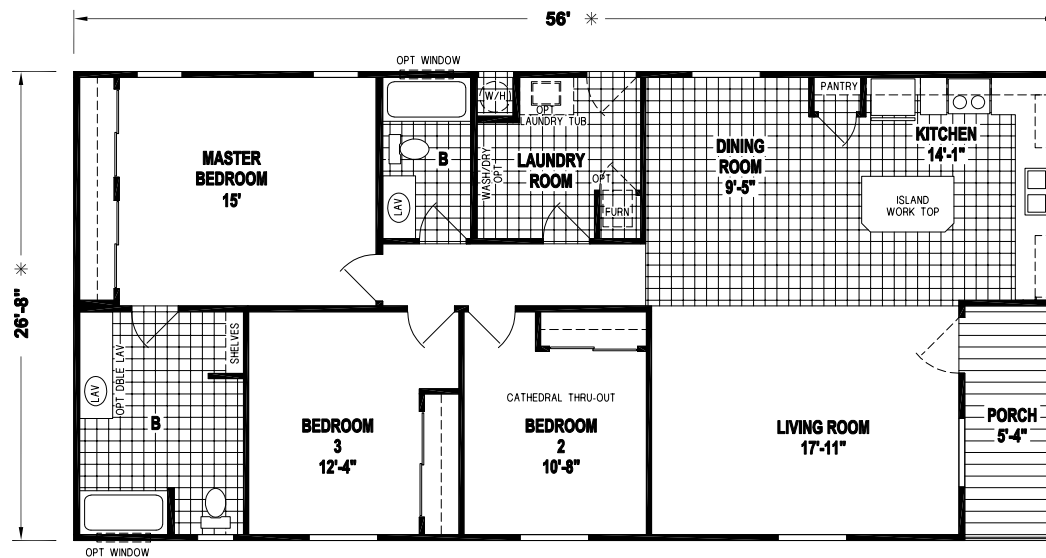


## PALM HAVEN 3427CT

2 BED-2 BATH  
1280 SQ.FT.

**3 BED-2 BATH**  
**1489 SQ.FT.**

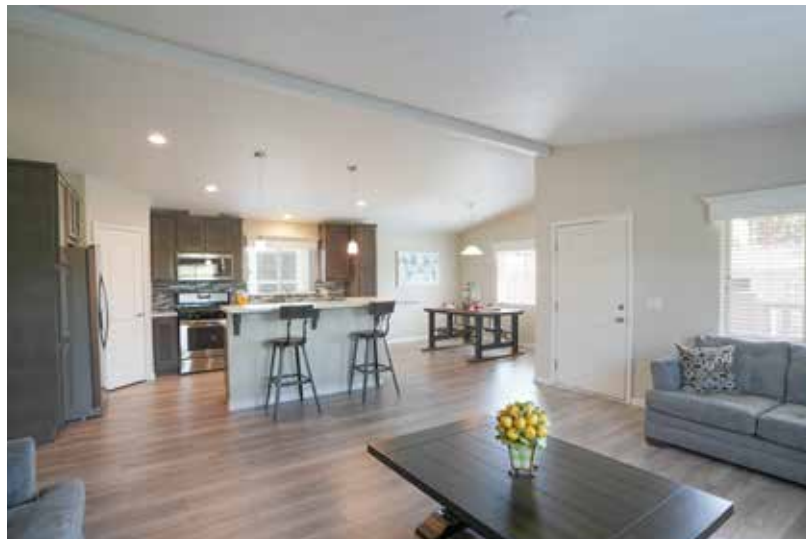




## PALM HAVEN 3437CT

3 BED-2 BATH  
1493 SQ.FT.

3410CT ▶

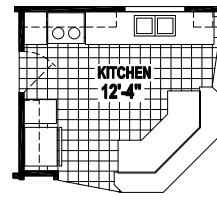
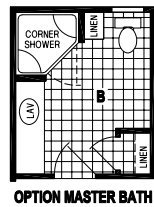




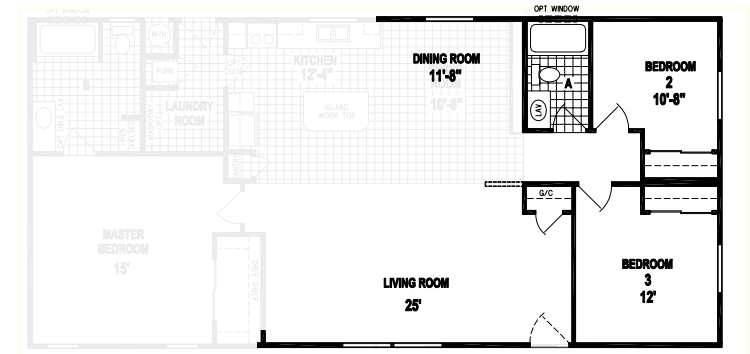
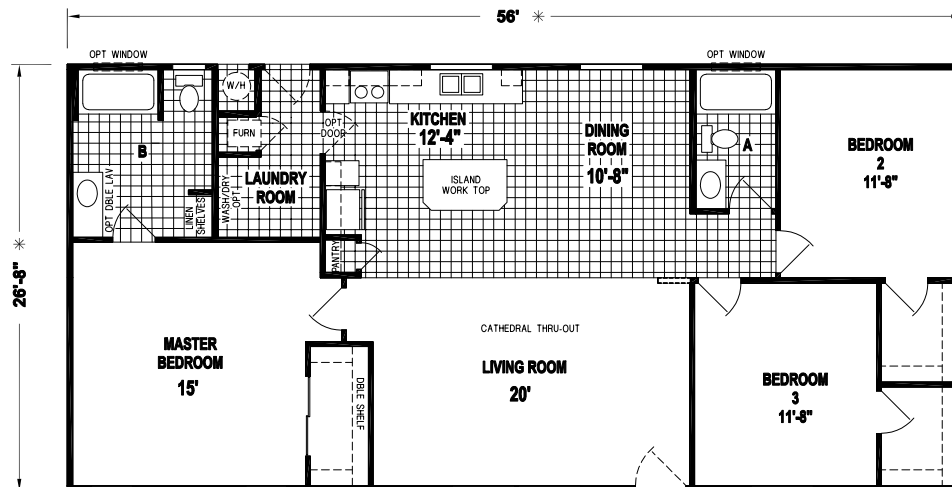


# PALM HAVEN 3448CT

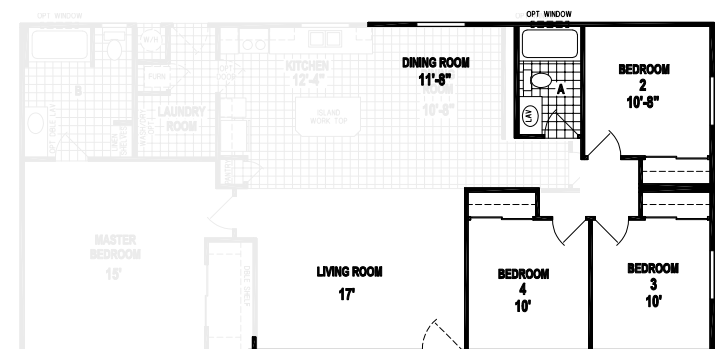
3 BED-2 BATH  
1493 SQ.FT.



**OPTION SLIDING GLASS DOOR**



**OPTION 3RD BEDROOM/ENTRY**



**OPTION 4TH BEDROOM**



### OPTION 60" SHOWER



17

# PALM HAVEN SERIES

## STANDARD FEATURES

### CONSTRUCTION

- 2X6 Floor Joists
- 2x8 Floor Joists on 16-wide Single Section Homes
- 2X4 Exterior Sidewalls
- R-22 Ceiling Insulation
- R-11 Wall Insulation
- R-11 Floor Insulation
- 20lb Roof Load
- PEX Water Lines
- Shut-Off Valves at all Sinks and Toilets
- 7'-6" Sidewalls with Cathedral Ceiling
- 3:12 and 4:12 Roof Pitch (Per Plan)
- Tongue and Groove OSB Floor Decking
- Dual-Glazed Vinyl Framed Low-E Windows
- Steel Outriggers on Exterior Walls

### EXTERIOR

- Vertical Cement Fiber Siding
- Class "A" Architectural Roof Shingles
- Exterior Light at Front and Rear Doors
- 36" 6-Panel Front Door with Deadbolt, Peephole and Knocker
- 32" 6-Panel Rear Door with Deadbolt, Peephole and Knocker
- 12" Front Overhang
- 6" Side Eaves (Per Plan)
- Semi-Gloss Exterior Paint
- Exterior Window Trim Throughout

### INTERIOR

- 1/2" Tape and Texture Drywall Throughout
- Hand-Finished Knock-Down Wall Texture
- Low Sheen Interior Paint
- 2-Panel By-Pass Closet Doors (Per Plan)
- 2-Panel Interior Doors with 3-Mortised Nickel Hinges
- Lever Door Handles with Satin Nickel Finish
- Shaw® Carpet
- 3/8" Rebond Carpet Pad
- Sculptured Floor Molding and Door Casing
- Congoleum® DiamondFlor™ Vinyl Flooring in Kitchen, Dining Room, Baths and Utility (Per Plan)
- 2" Faux Wood Blinds with Faux Wood Valance
- Wood Closet Shelving and Pole
- Toe Kick Registers in Kitchen and Baths

### KITCHEN

- Hardwood Shaker Cabinets
- Crown Molding on all Overhead Cabinets
- 3/4" Adjustable Base and Overhead Shelves
- Side-Mount Roller Guides
- Whirlpool® Brand Name Appliances
- 18.1 Cu. Ft. Frost-Free Refrigerator
- 30" Deluxe Gas Range with Electronic Ignition
- 30" Range Hood Vent
- Deep Stainless Steel Self Rimming Sink
- Single-Lever Faucet with Pull-Out Sprayer with Chrome Finish
- Bank of Drawers
- Laminate Countertop with Self-Edge
- 6" Laminate Backsplash

### ELECTRICAL / HEATING / PLUMBING

- 100 AMP Exterior Electrical Panel Box
- G.F.I. Protected Outlets in Kitchen and Baths
- Exterior G.F.I. Protected Outlet
- USB Receptable in Kitchen Area
- Smoke Detectors with Battery Back-Up
- Switch Wall Outlet in Living Room and Bedrooms
- Shut-Off Valves Throughout
- Silent Rocker Light Switches
- 40-Gallon Gas Water Heater
- Down Flow Gas Furnace
- Thermostat
- Plumb for Washer
- Prep for Gas Dryer
- Recessed Dryer Vent Box

### BATH FEATURES

- 60" One-Piece Fiberglass Tub / Shower
- China Self Rimming Sink with Overflow and Pop-Up Drain
- Single-Lever Diverter with Chrome Finish
- Dual-Control Faucets with Chrome Finish
- Elongated Water-Saver Commode
- Vanity Lighting Fixture
- Vanity Mirror with Beveled Edge
- Ceiling Exhaust Fan with Light
- 36" High Countertop
- Laminate Countertop with Self-Edge
- 6" Laminate Backsplash
- Ventilation Window (Per Plan)
- Towel Bar and Tissue Holder with Satin Nickel Finish
- Privacy Lock





## BUILDING YOUR HOME TO GREEN STANDARDS

- Engineered for efficient use of materials
- 80% of construction waste reused or recycled
- Use of engineered lumber
- Low V.O.C. adhesives and paint
- Formaldehyde-free insulation
- Sealed and tested ducting system
- High efficiency toilets
- Efficient distribution plumbing system
- Mechanical fresh air ventilation system